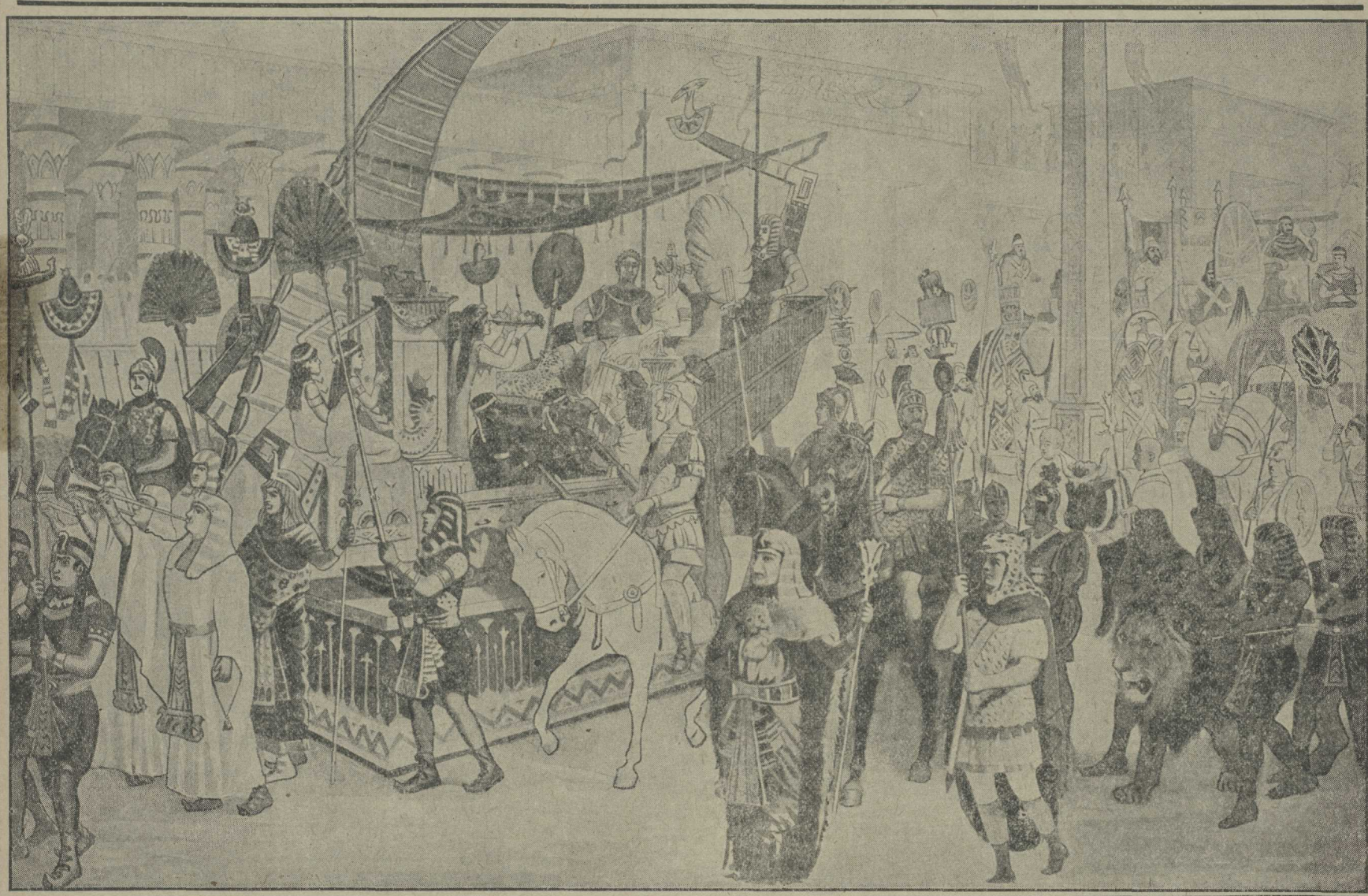
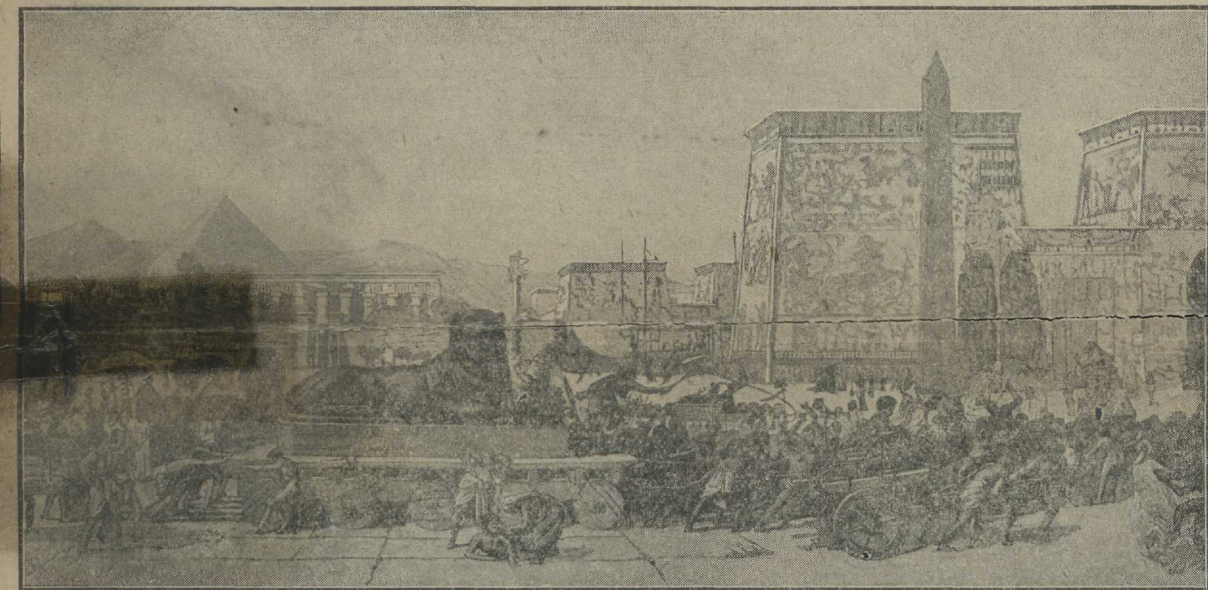


# THE NEWEST SHOW UNDER THE SUN BARNUM AND BAILEY GREATEST SHOW ON EARTH



AND THE MAGNIFICENT NEWLY ADDED SPECTACLE  
**CLEOPATRA**

PRESENTED ON THE BIGGEST STAGE IN THE WORLD WITH



1250 CHARACTERS  
BALLET OF 300 DANCING GIRLS  
CHORUS OF 400  
650 HORSES

AND A TRAINLOAD OF  
THE MOST GORGEOUS  
COSTUMES AND SCENERY  
EVER SEEN IN AMERICA

## GREATEST AMUSEMENT EVENT IN ALL HISTORY

Though for more than half a century this Circus has been the leading amusement enterprise of the world, it leaps forward for the season of 1912 on a scale of magnificence that has no precedent in the history of gigantic affairs, adding to its already stupendous size and its unparalleled novelty and richness the glorious new spectacle which for years to come will stand as the greatest achievement in the memory of man. Under the spell of the marvelous ensembles and stage pictures of this wordless mimodrama with its tons of scenery, gorgeous costumes, its beautiful ballet, and wonderful chorus, the audience is carried back to ancient Egypt, heavy with the legends of antiquity. They look into the streets of Alexandria as it was in the days of Cleopatra, throbbing with its strange cosmopolitan life, the mighty pyramids looking down from ages ago. The walls of Time fall down and spectators are thrilled by the dramatic story that inspired the genius of Shakespeare, reproduced as it actually occurred long centuries ago—the story of the world's most famous lovers, the betrayal of Rome, the suicide of Antony and the tragic death of the Enchantress of the Nile.



NEW YORK CITY MARVELED AT THIS GREAT PRODUCTION AND PRESS AND PUBLIC PRONOUNCED IT THE MOST NOTABLE DRAMATIC, SPECTACULAR AND CIRCUS EVENT IN AMERICAN HISTORY.  
**PRODUCED AT A COST OF \$500,000**



Gorgeous Free Street Parade at 10 o'clock A. M. Preceding First Exhibition. Two Performances Daily, at 2 and 8 P. M. Doors open 1 Hour Earlier.

One 50-Cent Ticket Admits to Everything. Children, under 12 Years old, Half Price.

**— THIS IS THE ONLY BIG SHOW COMING —**


Believe No False Announcements to the Contrary. The Day and Date are Positively Fixed, and there can be No Change in Time or Place.

**Special Cheap Excursions from All Points on All Railroads**

FOR RATES SEE OTHER SIDE OR ENQUIRE OF RAILROAD TICKET AGENT.

# B. & O. R. R. EXCURSIONS


TO THE GREATEST CIRCUS IN THE HISTORY OF THE WORLD



The

# BARNUM and BAILEY

Greatest Show on Earth



And the Newly Added  
Magnificent Spectacle

## CLEOPATRA

The Wonder Show of All Ages!

MOST MARVELOUS CIRCUS EVER PERFECTED.  
Newest, Greatest Features! Novel, Thrilling  
Sensations! Acts, Performances and Dis-  
plays Never Seen Before.

### SANDWINA

THE PHYSICALLY PERFECT WOMAN. Germany's Herculean  
Venus. Strongest Lady that ever lived. First appearance  
in America.

### MISS MAE WIRTH

AUSTRALIAN WUNDER EQUESTRIENNE.  
A Positive Sensation.

### A NEW NOVEL ELEPHANT EXHIBITION

In which these Hugh Beasts display the Skill of Professionals  
in a Real Game of Base Ball.

Whole Troupes, Groups and Companies of Arenic Stars  
New to America presenting the Highest Class Circus ever seen.

### ATTRACTIONS EXTRAORDINARY!

A Congress of Japan's Famous Strong Men,  
Gladiators, Swords Men, Wrestlers, Jiu-Jitsu  
and Athletic Champions.



### Superb Glorious Free Street Parade

A Big Splendid Free Show—all new, this year.

## THE BIGGEST MENAGERIE ON EARTH.

Greatest, Most Complete Zoological Exhibition ever brought to-  
gether. A Whole Family of Giraffes including a Nursing  
Baby Giraffe, born January 31st, 1912.

HERDS of ELEPHANTS and CAMELS, MARINE MONSTERS,  
BIRDS, REPTILES, BEASTS from every land, displayed in  
elaborate, commodious, appropriate, beautiful cages, dens,  
tanks and pens.

### The One Truly Great and Really Formost Show of the World

offering a splendid, interesting, instructive, enjoyable holiday  
at trifling expense. Lavishly liberal in now presenting without  
additional cost or price the Glorious Spectacle

## CLEOPATRA

A Tremendous, Historical Pantomimic Picture Drama.  
1250 CHARACTERS.  
300 DANCING GIRLS. CHORUS OF 400.  
An Exhibition Such as the World Never Saw Before.



# The Baltimore & Ohio Railroad

WILL SELL ROUND-TRIP EXCURSION TICKETS TO THE

## BARNUM & BAILEY

GREATEST SHOW ON EARTH

From all Stations named below at the following LOW RATES

## To PHILADELPHIA and Return

STATION	RATE
Leslie	\$2.14
Childs	1.95
Singerly	1.90
Elk Mills	1.85
Newark	1.60
Kiamemsi	1.20
Landenberg	1.50
Southwood	1.50
Hockessin	1.50
Yorklyn	1.46
Ashland	1.41
Mt. Cuba	1.35
Wooddale	1.27
Frankland	1.20
Green Bank	1.15
Marshallton	1.15
Wilmington	1.00
Carpenter	.73
Ogden	.69
Boothwyn	.66
Twin Oaks	.62
Felton	.56
Upland	.51
Chester	.50
Woodlyn	.42
Ridley	.38
Folsom	.34
Holmes	.32
Llanwellyn	.27
Collingdale	.24
Boone	.20
Darby	.19
60th Street	.15

WILL EXHIBIT AT  
**PHILADELPHIA**  
Week of  
**APRIL 29**  
Afternoon and Night

TICKETS GOOD ON REGULAR TRAINS.